

# Victorian mineral projects and selected occurrences

## LEGEND

— Structural / Geological Zone    — Registered Aboriginal Party    1: 1,000,000 Seamless Geology    1 Operating mine    7 Project in development    35 Exploration project    Port

Commodity	Antimony	Copper	Magnesium	Gold	Mineral sands: Ti, Zr & REE	Rare Earth Elements	Zinc	Lithium, Cesium, Tantalum	Tantalum	Silver	Molybdenum	High-purity alumina	High-purity silica	Iron	Tin	Tungsten	Platinum Group Elements
Occurrence	▲	▲	▲	▲	▲	REE	▲	LGT	▲	▲	▲			▲	▲	▲	PGE
Targeted & producing	■	■	■	■	■	■	■	■	■	■	■	■	■	■	■	■	■

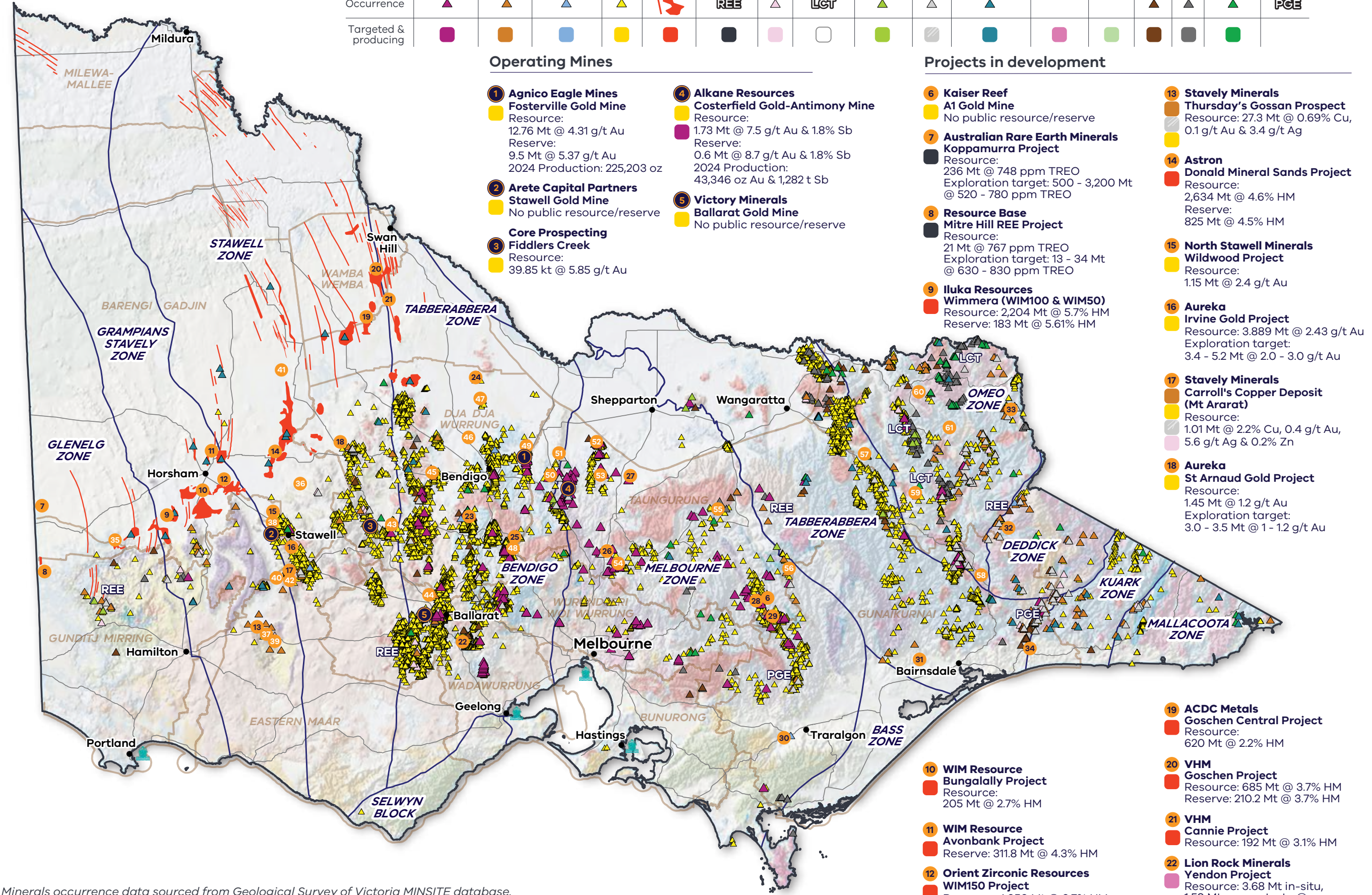
### Operating Mines

- 1 Agnico Eagle Mines Fosterville Gold Mine**  
Resource: 12.76 Mt @ 4.31 g/t Au  
Reserve: 9.5 Mt @ 5.37 g/t Au  
2024 Production: 225,203 oz
- 2 Arete Capital Partners Stawell Gold Mine**  
No public resource/reserve
- 3 Core Prospecting Fiddlers Creek**  
Resource: 39.85 kt @ 5.85 g/t Au
- 4 Alkane Resources Costerfield Gold-Antimony Mine**  
Resource: 1.73 Mt @ 5.7 g/t Au & 1.8% Sb  
Reserve: 0.6 Mt @ 8.7 g/t Au & 1.8% Sb  
2024 Production: 43,346 oz Au & 1,282 t Sb
- 5 Victory Minerals Ballarat Gold Mine**  
No public resource/reserve

### Projects in development

- 6 Kaiser Reef A1 Gold Mine**  
No public resource/reserve
- 7 Australian Rare Earth Minerals Koppamurra Project**  
Resource: 236 Mt @ 748 ppm TREO  
Exploration target: 500 - 3,200 Mt @ 520 - 780 ppm TREO
- 8 Resource Base Mitre Hill REE Project**  
Resource: 21 Mt @ 767 ppm TREO  
Exploration target: 13 - 34 Mt @ 630 - 830 ppm TREO
- 9 Iluka Resources Wimmera (WIM100 & WIM50)**  
Resource: 2,204 Mt @ 5.7% HM  
Reserve: 183 Mt @ 5.61% HM
- 10 WIM Resource Bungallally Project**  
Resource: 205 Mt @ 2.7% HM
- 11 WIM Resource Avonbank Project**  
Reserve: 311.8 Mt @ 4.3% HM
- 12 Orient Zirconic Resources WIM150 Project**  
Resource: 1,650 Mt @ 3.7% HM
- 13 Stavelly Minerals Thursday's Gossan Prospect**  
Resource: 27.3 Mt @ 0.69% Cu, 0.1 g/t Au & 3.4 g/t Ag
- 14 Astron Donald Mineral Sands Project**  
Resource: 2,634 Mt @ 4.6% HM  
Reserve: 825 Mt @ 4.5% HM
- 15 North Stawell Minerals Wildwood Project**  
Resource: 1.15 Mt @ 2.4 g/t Au
- 16 Aureka Irvine Gold Project**  
Resource: 3,889 Mt @ 2.43 g/t Au  
Exploration target: 3.4 - 5.2 Mt @ 2.0 - 3.0 g/t Au
- 17 Stavelly Minerals Carroll's Copper Deposit (Mt Ararat)**  
Resource: 1.01 Mt @ 2.2% Cu, 0.4 g/t Au, 5.6 g/t Ag & 0.2% Zn
- 18 Aureka St Arnaud Gold Project**  
Resource: 1.45 Mt @ 1.2 g/t Au  
Exploration target: 3.0 - 3.5 Mt @ 1 - 1.2 g/t Au
- 19 ACDC Metals Goschen Central Project**  
Resource: 620 Mt @ 2.2% HM
- 20 VHM Goschen Project**  
Resource: 685 Mt @ 3.7% HM  
Reserve: 210.2 Mt @ 3.7% HM
- 21 VHM Cannie Project**  
Resource: 192 Mt @ 3.1% HM
- 22 Lion Rock Minerals Yendon Project**  
Resource: 3.68 Mt in-situ, 1.59 Mt concentrate @ 34.68% Al<sub>2</sub>O<sub>3</sub>, 48.42% SiO<sub>2</sub>

- 23 Kaiser Reef Maldon (Union Hill Gold Mine)**  
Resource: 1.13 Mt @ 4.4 g/t Au  
Exploration target: 1.75 - 2.70 Mt @ 3.0 - 4.0 g/t
- 24 Catalyst Metals Four Eagles Gold Project**  
Resource: 0.67 Mt @ 7.7 g/t Au
- 25 Novo Resources Belltopper Gold Project**  
Resource: 0.82 Mt @ 3.95 g/t Au  
Exploration target: 1.5 - 2.1 Mt @ 6.6 - 8.4 g/t Au
- 26 Southern Cross Gold Sunday Creek Project**  
Exploration target: 8.1 - 9.6 Mt @ 8.3 - 10.6 g/t AuEq
- 27 Nagambie Resources Nagambie Mine**  
Resource: 0.539 Mt @ 3.3 g/t Au & 3.9% Sb
- 28 Rose of Denmark Mine**  
No public resource/reserve
- 29 Morning Star Gold Mine**  
No public resource/reserve
- 30 Latrobe Magnesium Demonstration Plant Under Construction**  
Proposed production: 10,000 tpa Mg
- 31 Gippsland Critical Minerals Fingerboards Project**  
Resource: 1,170 Mt @ 0.5% Zr, 1% TiO<sub>2</sub>, 0.05% TREO + Y<sub>2</sub>O<sub>3</sub>
- 32 Aeris Resources Stockman Project**  
Resource: 14.8 Mt @ 2.09% Cu, 4.0% Zn, 0.94 g/t Au & 36 g/t Ag  
Reserve: 9.6 Mt @ 1.9% Cu, 4.3% Zn, 1.0 g/t Au, 36 g/t Ag
- 33 Indigo Metals Unicorn Project**  
Resource: 203 Mt @ 0.036% Mo, 0.05% Cu & 2.97 g/t Ag
- 34 Eastern Resources Nowa Nowa Iron Project**  
Resource: 9.05 Mt @ 50.8% Fe
- 35 ACDC Metals Douglas Project**
- 36 AIS Resources North Kingston Prospect**
- 37 Stavelly Minerals Junction Prospect**
- 38 North Stawell Minerals Darlington Project**
- 39 Stavelly Minerals Fairview Prospect**
- 40 Aureka Glenlyle Gold Project**
- 41 ACDC Metals Watchem Project**
- 42 Aureka Langi Logan Gold Project**
- 43 Leviathan Gold Excelsior Prospect**
- 44 Petra Minerals Creswick Quartz**
- 45 Kalamazoo Resources Tarnagulla Gold Project**
- 46 Falcon Metals Pyramid Hill Gold Project**
- 47 Catalyst Metals Tandarra Gold Project**
- 48 Adelong Gold Lauriston Gold Project**
- 49 Agnico Eagle Mines Greater Fosterville Project**
- 50 Bubalus Resources Crosbie North Project**
- 51 Golden Camel Mining Golden Camel Mine**
- 52 Dart Mining Rushworth Project**
- 53 ECR Minerals Bailieston Project**
- 54 Golden Cross Resources Reedy Creek Gold Project**
- 55 Adelong Gold Apollo Gold Project**
- 56 Carawine Resources Hill 800 Prospect**
- 57 Advance Metals Happy Valley Prospect**
- 58 Infinity Metals Cobungra Gold-Silver Project**
- 59 Nexus Minerals Merrimac LCT Project**
- 60 Kali Metals Tallangatta Lithium Project**
- 61 AIS Resources Bright Gold Project**



Minerals occurrence data sourced from Geological Survey of Victoria MINSITE database. Background depicts 1: 1,000,000 seamless geology over greyscale digital terrain model. Maintained at: [resources.vic.gov.au/geology-exploration/industry-investment/mineral-resources-development](https://resources.vic.gov.au/geology-exploration/industry-investment/mineral-resources-development)