

AUSTRALIA MINERALS

REALISE THE OPPORTUNITY

VICTORIA

Cameron.Cairns@ecodev.vic.gov.au

Manager Minerals Geoscience
Geological Survey of Victoria

earthresources.vic.gov.au/



VICTORIA - SUMMARY

Capital: Melbourne ([World's second most liveable city](#))

Area (land): 227,436km² (6th)

Population: 6.43 million (2nd)
>75% in Melbourne

[Best performing Australian economy](#)

Ranks first on economic growth, retail trade, unemployment and construction work done

[Melbourne Airport](#): Busiest passenger and container airport, 33 direct international destinations

[Port of Melbourne](#): Largest container and automotive port

AUSTRALIA  MINERALS



RESOURCES - SUMMARY

Victoria is the biggest exporter of mining equipment, technology and services (METS) in Australia

- Victoria is an Australian leader in the METS sector, exporting skills and expertise to the domestic and international mining market.
- Melbourne is an Australian mining hub with >100 mining and resources companies headquartered in the city center.
- Victoria has excellent infrastructure including road, rail, port and power (incl renewables).

The Victorian Government's approach is to target prospective geological provinces at the pre-competitive stage and undertake a coordinated set of activities to reduce exploration risk, encourage investment and build community confidence:

- Build the geoscience understanding
- Engage local communities early
- Understand the natural resource and land use of the region
- Develop enduring relationships with quality investors

GEOSCIENCE

Pre-competitive data and knowledge

- free maps, reports, data

Geology

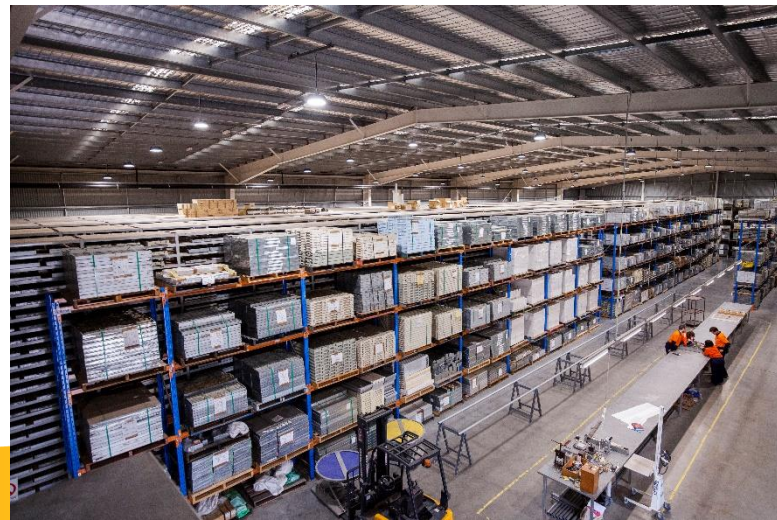
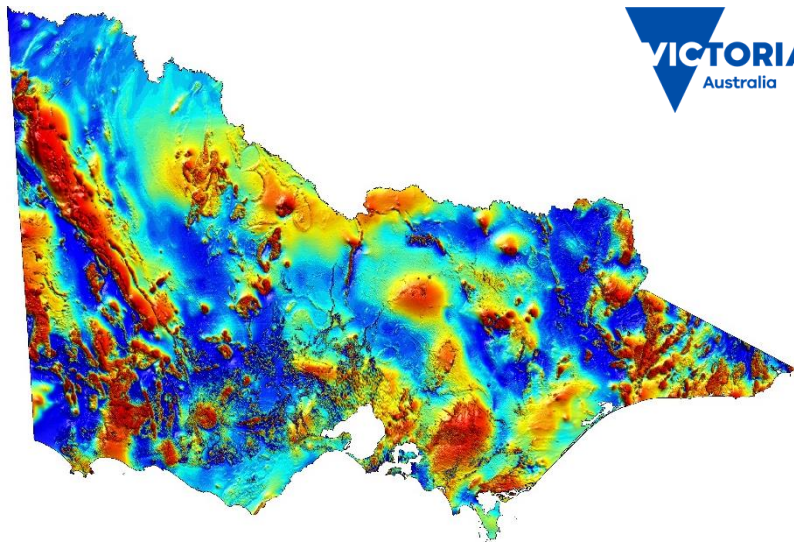
- Seamless: 1:250k and 1:50k
- 3D 1:250k full-crust model

Geophysics

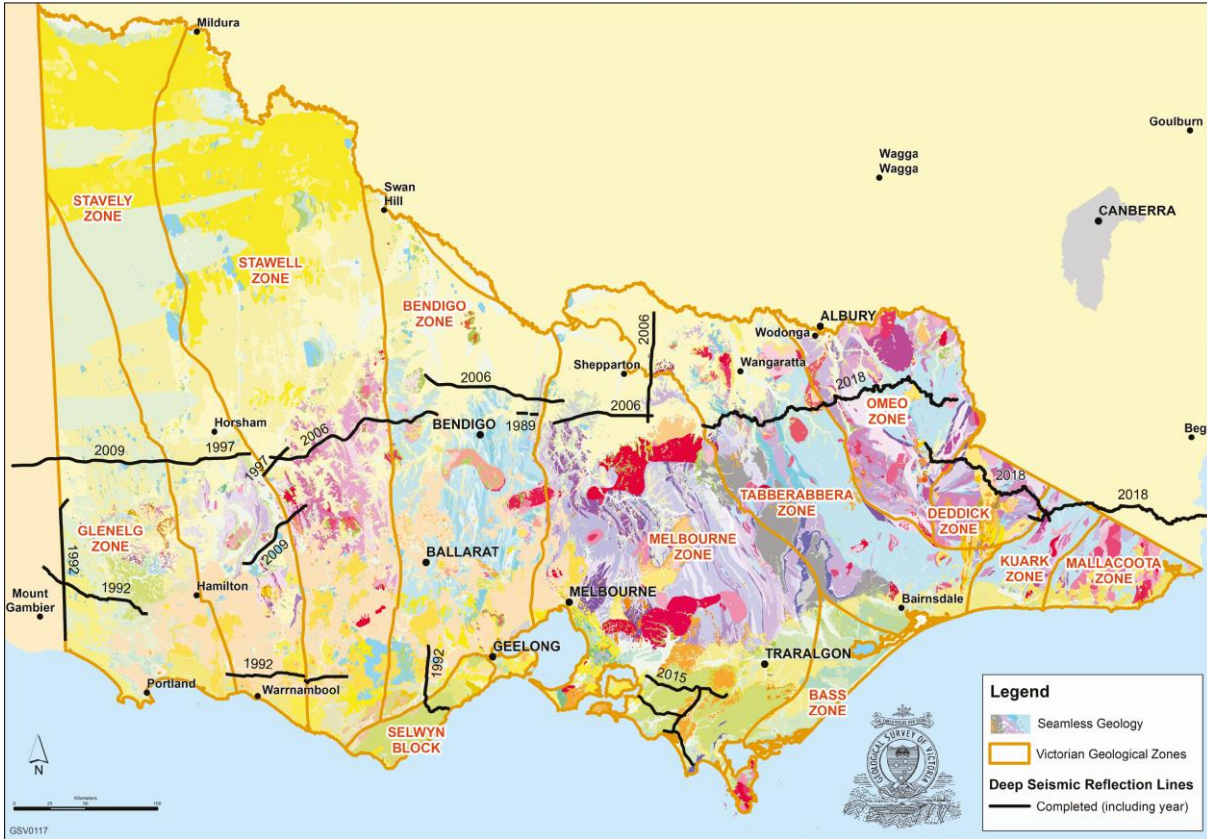
- Modern state-wide
- Magnetics: 200-400m line spacing
- Ground gravity: 1.5 km nominal spacing
- Deep seismic reflection

Drill Core Library

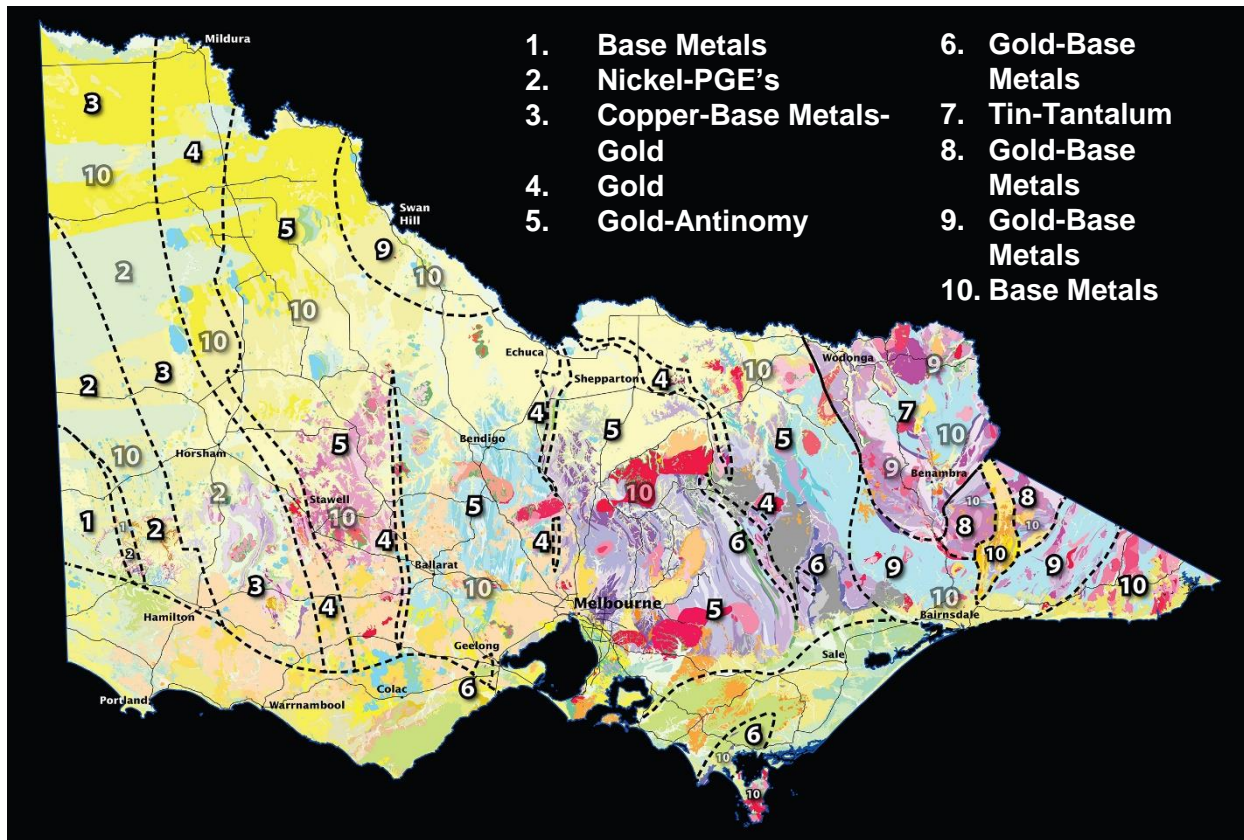
- 1.5 million metres drill core/cuttings (~A\$2.3B)



Deep Seismic Reflection

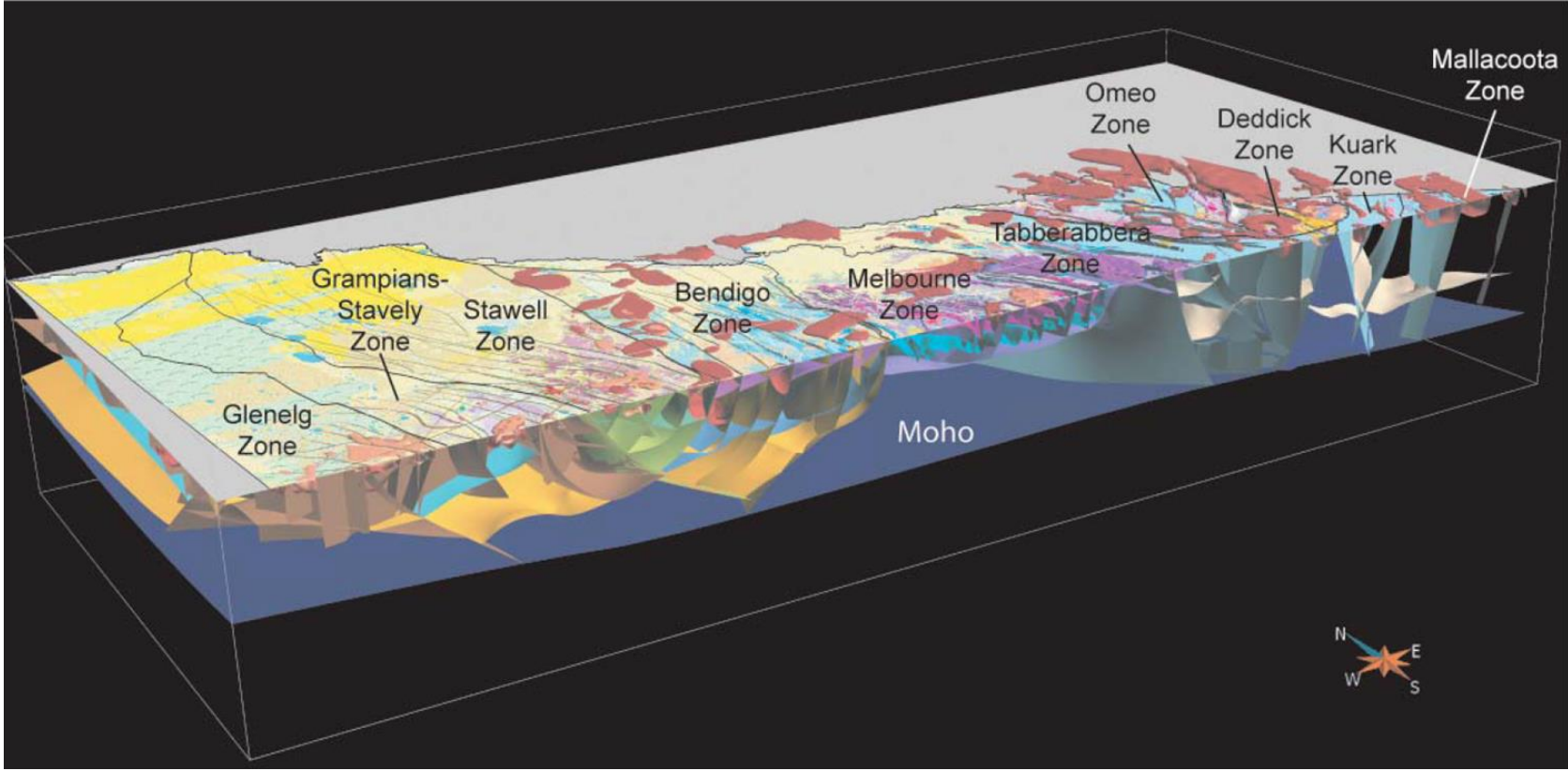


Key Commodities



1. Base Metals
2. Nickel-PGE's
3. Copper-Base Metals-Gold
4. Gold
5. Gold-Antimony
6. Gold-Base Metals
7. Tin-Tantalum
8. Gold-Base Metals
9. Gold-Base Metals
10. Base Metals

Victoria – State-wide informed 3D model

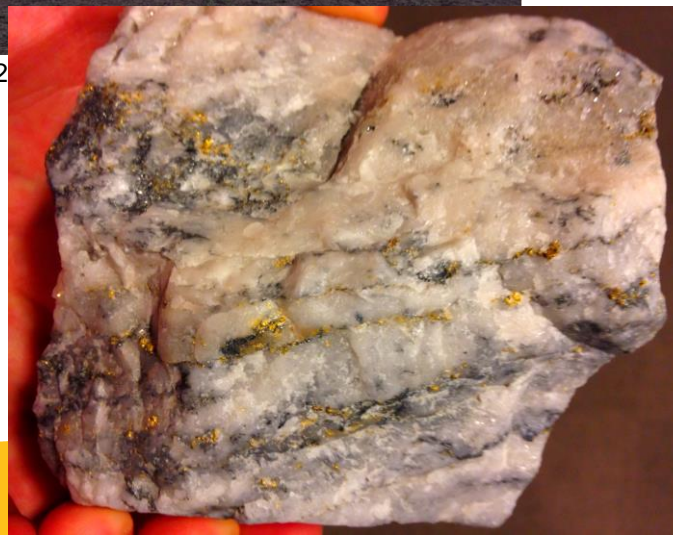


Health of Sector (FY16-17)

- Victoria is Australia's largest exporter of mining equipment, technology and services (METS), a sector estimated to be worth \$13.6 billion annually and accounting for over 120,000 jobs.
- Victorian resources capital expenditure: \$805M
- Minerals production value: \$750M
- ~190,000m pa exploration drilling
- One of the highest grade, low cost gold mining operations in the world: Fosterville

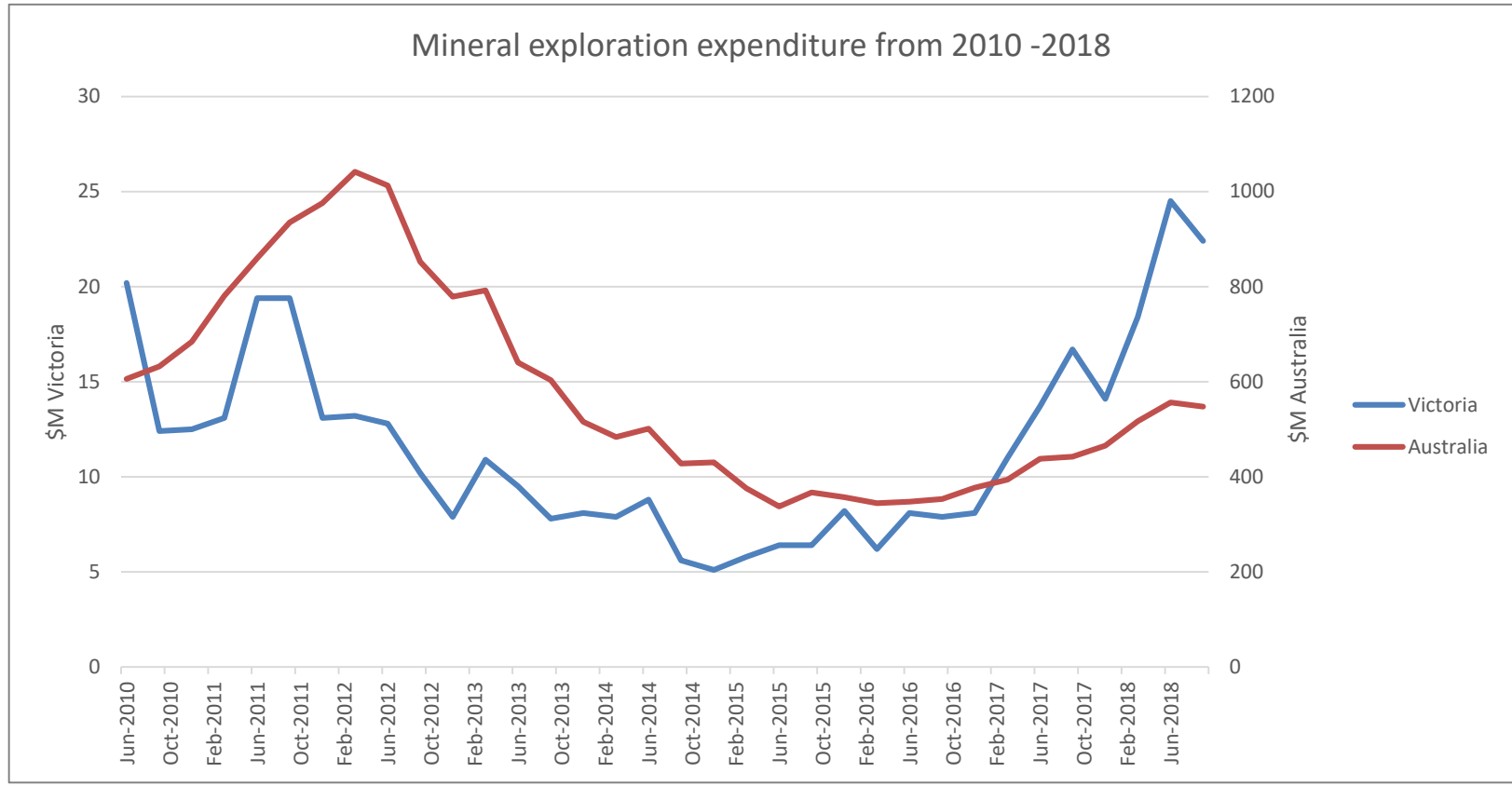


Drill hole STAVELY12



>2% Au, Fosterville

Mineral exploration expenditure 2010-2018



VICTORIA - STATE OF DISCOVERY

1. Confident communities and responsible explorers
2. Advancing geoscience and encouraging mineral exploration and development
3. Victoria as a global mining hub
4. Improve regulation practice and industry compliance
5. Deliver modern, fit-for-purpose laws

TARGET Minerals Exploration Grants

Stavely Minerals Exploration Initiative

AUSTRALIA  MINERALS





6TH ANNUAL
**INTERNATIONAL
MINING AND
RESOURCES
CONFERENCE + EXPO**
28-31 OCTOBER 2019



imarcmelbourne.com/
Melbourne

- >6,000 delegates from >90 countries
- >350 mining and resource experts
- >100 hours networking opportunities
- FREE Exhibition**
- >200 leading service companies



Exploration, Investment and Finance, Future Energy, International and Local opportunities, People, Projects and Infrastructure, Technology, Innovation and Operational Excellence, Country Focus sessions

AUSTRALIA MINERALS

THANK YOU

Cameron.Cairns@ecodev.vic.gov.au

Manager Minerals Geoscience
Geological Survey of Victoria
+61 3 9452 8972

earthresources.vic.gov.au/

