

Resource and Land Use Model - Community Workshops

As part of the Victorian Gas Program's assessment of the risks, benefits and impacts of onshore conventional gas exploration and development, the Geological Survey of Victoria is evaluating land uses and landscape features across the south west region.

A series of community workshops are being held across the region. Residents are welcome to view the preliminary land use model and help identify areas of sensitivity that would need to be considered if the current moratorium on onshore conventional gas was lifted.

The final land use model will be integrated with other geoscientific and environmental studies and form part of the advice to Government in 2020.

How we built the preliminary land use model

We know that the south west is home to extensive areas of significance including the Great Ocean Road, Budj Bim, Tower Hill and Long Swamp Ramsar wetlands. We've collected over 140 robust technical datasets to map the region's unique natural, cultural, environmental, economic and social land uses and values.

These datasets (such as those used to identify locations of significant flora and fauna, waterways or windfarms) are displayed spatially to produce a map showing areas of sensitivity.

The data has been organised into seven themes and scored to identify potential locations where the land may be constrained in some way. These themes are:



This process helps assess the extent to which a land feature, or area of sensitivity or significance, would constrain the potential for onshore conventional gas exploration or development.

If land is scored as being constrained, this could mean two things:

1. That the land is not appropriate for conventional gas exploration or development.
2. That the land feature or value would require additional consideration and mitigating actions embedded into the licensing process.

The outcome of this process is a preliminary land use model that takes the local context into account.

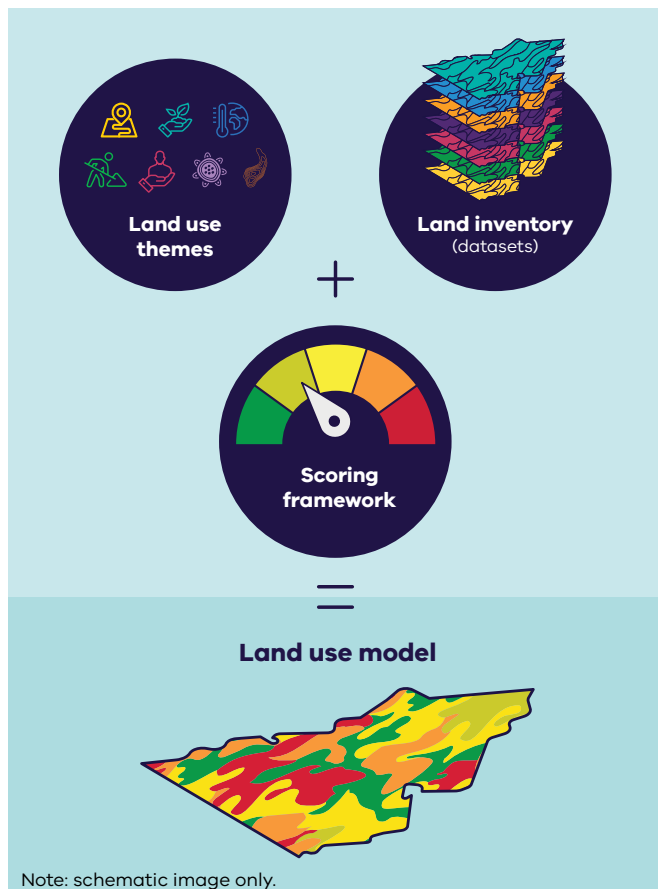
Windfarms are an example of a constrained area



Physical feature: Windfarm

- Theme: Infrastructure
- Sub-theme (criteria): Energy infrastructure
- Dataset: Government windfarm data layer
- Score: Windfarm present = Extremely constrained, due to conflicting infrastructure requirements.
- Preliminary land use model: Constrained area displayed in red.

Resource and Land Use Model - Community Workshops



Regulation of the onshore gas industry

Unconventional gas (fracking and coal seam gas) is permanently banned in Victoria and onshore conventional gas exploration and development is under moratorium until 30 June 2020.

Regulatory controls for onshore conventional gas exploration and development are provided by the Petroleum Act 1998 and regulations. This legislation ensures areas such as wilderness land, national and state parks are excluded or restricted from gas exploration and development.

The regulations require licensees to undertake an extensive detailed assessment of land and environmental impacts as part of the licencing process.

We want to hear from you

The wide range of authoritative datasets we've used means we can easily map high levels of sensitivity across the south west such as national parks, the Tyrendarra lava flow, wetlands and waterways. The community workshops will test the preliminary land use model with residents and invite participants to share local knowledge to help ensure the final model reflects local values.

Workshops will run on the hour:

Date	Times	Location	Venue
Saturday 19 October	10am, 11am, 12 noon	Port Campbell	Port Campbell Surf Club
Tuesday 22 October	4pm, 5pm, 6pm	Warrnambool	Lighthouse Theatre Foyer
Thursday 24 October	4pm, 5pm, 6pm	Port Fairy	Charlie's on East
Tuesday 29 October	4pm, 5pm, 6pm	Penshurst	Volcanoes Discovery Centre
Thursday 31 October	4pm, 5pm, 6pm	Portland	Portland Library
Wednesday 6 November	4pm, 5pm, 6pm	Camperdown	Killara Centre
Thursday 7 November	4pm, 5pm, 6pm	Casterton	Casterton Town Hall

Final Resource and Land Use Model - South West Victoria

Feedback from the community workshops will inform the final land use model, which will be provided in an interactive spatial format for stakeholders, communities and government.

Resource and land use workshops will be held in the Gippsland region in early 2020.

Further information

Further information about the project is available from earthresources.vic.gov.au/gasprogram

You can also call the Department of Jobs, Precincts and Regions on 136 186 or email the Victorian Gas Program at vgp@djpr.vic.gov.au