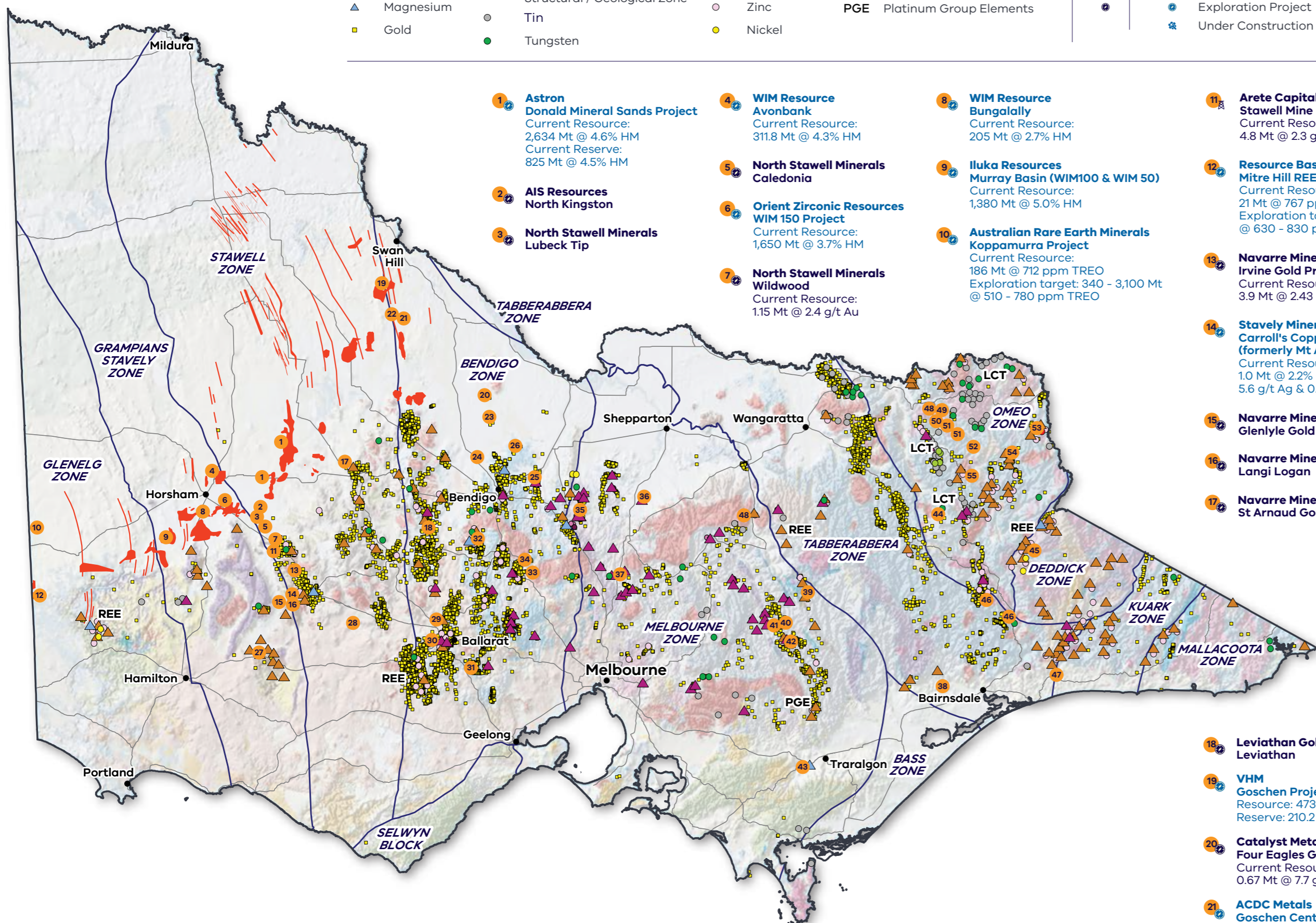


# Current mineral projects and selected occurrences

## LEGEND

▲ Antimony	Mineral sand deposit: Ti, Zr & REE	● Rhenium	LCT Lithium, Cesium, Tantalum	Gold Project	Critical Minerals / Strategic Minerals Project
▲ Copper	— Structural / Geological Zone	● Tantalum	REE Rare Earth Elements	⊠ Operating Mine	🔍 Exploration Project
▲ Magnesium	● Tin	○ Zinc	PGE Platinum Group Elements	⊠ Under Construction	
■ Gold	● Tungsten	● Nickel			



**1** **Astron Donald Mineral Sands Project**  
Current Resource: 2,634 Mt @ 4.6% HM  
Current Reserve: 825 Mt @ 4.5% HM

**2** **AIS Resources North Kingston**

**3** **North Stawell Minerals Lubeck Tip**

**4** **WIM Resource Avonbank**  
Current Resource: 311.8 Mt @ 4.3% HM

**5** **North Stawell Minerals Caledonia**

**6** **Orient Zirconic Resources WIM 150 Project**  
Current Resource: 1,650 Mt @ 3.7% HM

**7** **North Stawell Minerals Wildwood**  
Current Resource: 1.15 Mt @ 2.4 g/t Au

**8** **WIM Resource Bungally**  
Current Resource: 205 Mt @ 2.7% HM

**9** **Iluka Resources Murray Basin (WIM100 & WIM 50)**  
Current Resource: 1,380 Mt @ 5.0% HM

**10** **Australian Rare Earth Minerals Koppamurra Project**  
Current Resource: 186 Mt @ 712 ppm TREO  
Exploration target: 340 - 3,100 Mt @ 510 - 780 ppm TREO

**11** **Arete Capital Partners Stawell Mine**  
Current Resource: 4.8 Mt @ 2.3 g/t Au

**12** **Resource Base Mitre Hill REE Project**  
Current Resource: 21 Mt @ 767 ppm TREO  
Exploration target: 13 - 34 Mt @ 630 - 830 ppm TREO

**13** **Navarre Minerals Irvine Gold Project**  
Current Resource: 3.9 Mt @ 2.43 g/t Au

**14** **Stavely Minerals Carroll's Copper Deposit (formerly Mt Ararat)**  
Current Resource: 1.0 Mt @ 2.2% Cu, 0.4 g/t Au, 5.6 g/t Ag & 0.3% Zn

**15** **Navarre Minerals Glenlyle Gold Project**

**16** **Navarre Minerals Langi Logan**

**17** **Navarre Minerals St Arnaud Gold Project**

**18** **Leviathan Gold Leviathan**

**19** **VHM Goschen Project**  
Resource: 473.8 Mt @ 2.57% HM  
Reserve: 210.2 Mt @ 3.8% HM

**20** **Catalyst Metals Four Eagles Gold Project**  
Current Resource: 0.67 Mt @ 7.7 g/t Au

**21** **ACDC Metals Goschen Central Project**  
Resource: 122 Mt @ 3.4% HM

**22** **VHM Cannie Project**  
Resource: 192 Mt @ 3.1% HM

**23** **Catalyst Metals Tandarra Gold Project**

**24** **Falcon Metals Pyramid Hill**

**25** **Agnico Eagle Mines Fosterville Gold Mine**  
Current Resource: 21.6 Mt @ 4.28 g/t Au  
Current Reserve: 8.6 Mt @ 6.1 g/t Au  
2023 Production: 277,694 oz

**26** **Catalyst Metals Golden Camel**  
Current Resource: 0.27 Mt @ 1.7 g/t Au

**27** **Stavely Minerals Thursday's Gossan**  
Current Resource: 27.3 Mt @ 0.69% Cu, 0.1 g/t Au & 3.4 g/t Ag

**28** **Serra Energy Metals Beaufort**

**29** **Petra Minerals Creswick Quartz**

**30** **Victory Minerals Ballarat Mine**  
Current Resource: 6.7 Mt @ 4.4 g/t Au

**31** **Peak Minerals Yendon**  
Current Resource: 3.68 Mt in-situ, 1.59 Mt concentrate @ 34.68% Al<sub>2</sub>O<sub>3</sub>, 48.42% SiO<sub>2</sub>

**32** **Kaiser Reef Maldon (Union Hill)**  
Current Resource: 1.2 Mt @ 4.4 g/t Au

**33** **Great Pacific Gold Lauriston**

**34** **Novo Resources Malmsbury**  
Current Resource: 0.82 Mt @ 3.95 g/t Au

**35** **Mandalay Resources Costerfield Gold-Antimony Mine**  
Current Resource: 0.7 Mt @ 9.26 g/t Au & 3.4% Sb  
Current Reserve: 0.56 Mt @ 10.5 g/t Au & 1.9% Sb  
2023 Production: 47,661 oz Au & 1,860 t Sb

**36** **Nagambie Resources Nagambie**  
Current Resource: 0.415 Mt @ 3.6 g/t Au & 4.3% Sb (11.5 g/t AuEq oz)

**37** **Southern Cross Gold Sunday Creek**  
Exploration target: 4.4 - 5.1 Mt @ 7.2 - 9.7 g/t AuEq for 1.0 - 1.6 Moz AuEq

**38** **Gippsland Critical Minerals Fingerboards**  
Current Resource: 2,740 Mt @ 1.95% HM  
Current Reserve: 173 Mt @ 5.0% HM

**39** **Carawine Resources Hill 800**  
Current Resource: 1.12 Mt @ 1.5 g/t Au

**40** **Kaiser Reef A1 Gold Mine**  
Current Resource: 1.26 Mt @ 6.13 g/t Au

**41** **Rose of Denmark Mine**  
Current Resource: 0.04 Mt @ 6.0 g/t Au

**42** **Morning Star Gold Mine**  
Current Resource: 4.6 Mt @ 6.1 g/t Au

**43** **Latrobe Magnesium Demonstration Plant Construction**  
Proposed production: 10,000 tpa Mg

**44** **Nexus Minerals Jamieson Minerals Project**

**45** **Aeris Resources Stockman Project**  
Current Resource: 15.8 Mt @ 2.1% Cu, 4.0% Zn, 1.1 g/t Au & 36 g/t Ag  
Current Reserve: 9.6 Mt @ 1.9% Cu, 4.3% Zn, 1.0 g/t Au, 36 g/t Ag

**46** **First Au Snowstorm, Haunted Stream**

**47** **Eastern Resources Nowa Nowa**  
Current Resource: 9.05 Mt @ 50.8% Fe

**48** **Great Pacific Gold Golden Mountain, Homeward Bound**

**49** **Kali Metals Tallangatta Lithium Project**

**50** **Dart Mining NL Dorchapel Lithium**

**51** **Serra Energy Metals Twist Creek, Happy Valley**

**52** **AIS Resources Bright Gold Project**

**53** **Dart Mining NL Unicorn Project**  
Current Resource: 203 Mt @ 0.036% Mo, 0.05% Cu & 2.97 g/t Ag

**54** **Dart Mining NL Mountain View**  
Current Resource: 0.03 Mt @ 4.5 g/t Au & 4.2 g/t Ag

**55** **Dart Mining NL Granite Flat**

Map depicts 1:1,000,000 seamless geology over greyscale digital terrain model.  
Maintained at: [resources.vic.gov.au/geology-exploration/industry-investment/mineral-resources-development](https://resources.vic.gov.au/geology-exploration/industry-investment/mineral-resources-development)