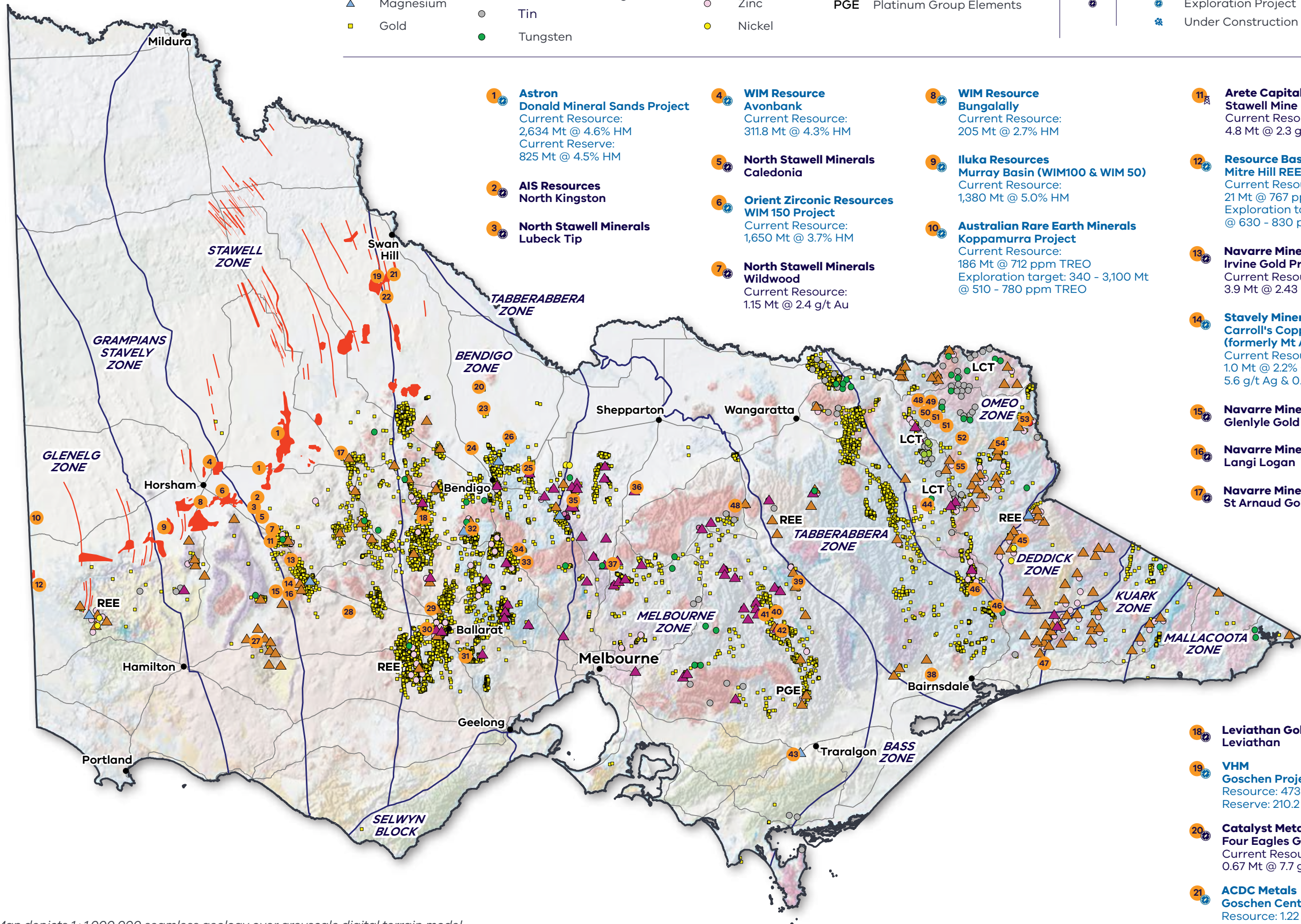


Current mineral projects and selected occurrences

LEGEND

- | | | | | | |
|-------------|---------------------------------------|------------|-------------------------------|----------------------|--|
| ▲ Antimony | Mineral sand deposit:
Ti, Zr & REE | ● Rhenium | LCT Lithium, Cesium, Tantalum | Gold Project | Critical Minerals /
Strategic Minerals
Project |
| ▲ Copper | — Structural / Geological Zone | ● Tantalum | REE Rare Earth Elements | ⊠ Operating Mine | 🔍 Exploration Project |
| ▲ Magnesium | ● Tin | ○ Zinc | PGE Platinum Group Elements | ⊠ Under Construction | |
| ■ Gold | ● Tungsten | ● Nickel | | | |



1 **Astron Donald Mineral Sands Project**
Current Resource: 2,634 Mt @ 4.6% HM
Current Reserve: 825 Mt @ 4.5% HM

2 **AIS Resources North Kingston**

3 **North Stawell Minerals Lubeck Tip**

4 **WIM Resource Avonbank**
Current Resource: 311.8 Mt @ 4.3% HM

5 **North Stawell Minerals Caledonia**

6 **Orient Zirconic Resources WIM 150 Project**
Current Resource: 1,650 Mt @ 3.7% HM

7 **North Stawell Minerals Wildwood**
Current Resource: 1.15 Mt @ 2.4 g/t Au

8 **WIM Resource Bungally**
Current Resource: 205 Mt @ 2.7% HM

9 **Iluka Resources Murray Basin (WIM100 & WIM 50)**
Current Resource: 1,380 Mt @ 5.0% HM

10 **Australian Rare Earth Minerals Koppamurra Project**
Current Resource: 186 Mt @ 712 ppm TREO
Exploration target: 340 - 3,100 Mt @ 510 - 780 ppm TREO

11 **Arete Capital Partners Stawell Mine**
Current Resource: 4.8 Mt @ 2.3 g/t Au

12 **Resource Base Mitre Hill REE Project**
Current Resource: 21 Mt @ 767 ppm TREO
Exploration target: 13 - 34 Mt @ 630 - 830 ppm TREO

13 **Navarre Minerals Irvine Gold Project**
Current Resource: 3.9 Mt @ 2.43 g/t Au

14 **Stavely Minerals Carroll's Copper Deposit (formerly Mt Ararat)**
Current Resource: 1.0 Mt @ 2.2% Cu, 0.4 g/t Au, 5.6 g/t Ag & 0.3% Zn

15 **Navarre Minerals Glenlyle Gold Project**

16 **Navarre Minerals Langi Logan**

17 **Navarre Minerals St Arnaud Gold Project**

18 **Leviathan Gold Leviathan**

19 **VHM Goschen Project**
Resource: 473.8 Mt @ 2.57% HM
Reserve: 210.2 Mt @ 3.8% HM

20 **Catalyst Metals Four Eagles Gold Project**
Current Resource: 0.67 Mt @ 7.7 g/t Au

21 **ACDC Metals Goschen Central Project**
Resource: 1.22 Mt @ 3.4% HM

22 **VHM Cannie Project**
Resource: 192 Mt @ 3.1% HM

23 **Catalyst Metals Tandarra Gold Project**

24 **Falcon Metals Pyramid Hill**

25 **Agnico Eagle Mines Fosterville Gold Mine**
Current Resource: 21.6 Mt @ 4.28 g/t Au
Current Reserve: 8.6 Mt @ 6.1 g/t Au
2023 Production: 277,694 oz

26 **Catalyst Metals Golden Camel**
Current Resource: 0.27 Mt @ 1.7 g/t Au

27 **Stavely Minerals Thursday's Gossan**
Current Resource: 27.3 Mt @ 0.69% Cu, 0.1 g/t Au & 3.4 g/t Ag

28 **Serra Energy Metals Beaufort**

29 **Petra Minerals Creswick Quartz**

30 **Victory Minerals Ballarat Mine**
Current Resource: 6.7 Mt @ 4.4 g/t Au

31 **Peak Minerals Yendon**
Current Resource: 3.68 Mt in-situ, 1.59 Mt concentrate @ 34.68% Al₂O₃, 48.42% SiO₂

32 **Kaiser Reef Maldon (Union Hill)**
Current Resource: 1.2 Mt @ 4.4 g/t Au

33 **Great Pacific Gold Lauriston**

34 **Novo Resources Malmsbury**
Current Resource: 0.82 Mt @ 3.95 g/t Au

35 **Mandalay Resources Costerfield Gold-Antimony Mine**
Current Resource: 0.7 Mt @ 9.26 g/t Au & 3.4% Sb
Current Reserve: 0.56 Mt @ 10.5 g/t Au & 1.9% Sb
2023 Production: 47,661 oz Au & 1,860 t Sb

36 **Nagambie Resources Nagambie**
Current Resource: 0.415 Mt @ 3.6 g/t Au & 4.3% Sb (11.5 g/t AuEq oz)

37 **Southern Cross Gold Sunday Creek**
Exploration target: 4.4 - 5.1 Mt @ 7.2 - 9.7 g/t AuEq for 1.0 - 1.6 Moz AuEq

38 **Gippsland Critical Minerals Fingerboards**
Current Resource: 2,740 Mt @ 1.95% HM
Current Reserve: 173 Mt @ 5.0% HM

39 **Carawine Resources Hill 800**
Current Resource: 1.12 Mt @ 1.5 g/t Au

40 **Kaiser Reef A1 Gold Mine**
Current Resource: 1.26 Mt @ 6.13 g/t Au

41 **Rose of Denmark Mine**
Current Resource: 0.04 Mt @ 6.0 g/t Au

42 **Morning Star Gold Mine**
Current Resource: 4.6 Mt @ 6.1 g/t Au

43 **Latrobe Magnesium Demonstration Plant Construction**
Proposed production: 10,000 tpa Mg

44 **Nexus Minerals Jamieson Minerals Project**

45 **Aeris Resources Stockman Project**
Current Resource: 15.8 Mt @ 2.1% Cu, 4.0% Zn, 1.1 g/t Au & 36 g/t Ag
Current Reserve: 9.6 Mt @ 1.9% Cu, 4.3% Zn, 1.0 g/t Au, 36 g/t Ag

46 **First Au Snowstorm, Haunted Stream**

47 **Eastern Resources Nowa Nowa**
Current Resource: 9.05 Mt @ 50.8% Fe

48 **Great Pacific Gold Golden Mountain, Homeward Bound**

49 **Kali Metals Tallangatta Lithium Project**

50 **Dart Mining NL Dorchapel Lithium**

51 **Serra Energy Metals Twist Creek, Happy Valley**

52 **AIS Resources Bright Gold Project**

53 **Dart Mining NL Unicorn Project**
Current Resource: 203 Mt @ 0.036% Mo, 0.05% Cu & 2.97 g/t Ag

54 **Dart Mining NL Mountain View**
Current Resource: 0.03 Mt @ 4.5 g/t Au & 4.2 g/t Ag

55 **Dart Mining NL Granite Flat**

Map depicts 1:1,000,000 seamless geology over greyscale digital terrain model.
Maintained at: resources.vic.gov.au/geology-exploration/industry-investment/mineral-resources-development