

AUSTRALIA MINERALS

REALISE THE OPPORTUNITY

VICTORIA

It's not just Fosterville: emerging world-class gold and copper opportunities

Cameron.Cairns@ecodev.vic.gov.au

Manager Minerals Geoscience
Geological Survey of Victoria

earthresources.vic.gov.au



VICTORIA

Capital: Melbourne ([World's second most liveable city](#))

Area (land): 227,436km² (6th)

Population: 6.59 million (2nd)
>75% in Melbourne, 4 in top 20 city/urban centres

[Best performing Australian economy](#)

First in 4 of 8 indicators, including construction

[Highly skilled](#): One third of Australian graduates

[Melbourne Airport](#): Busiest passenger and container airport, 33 direct international destinations

[Port of Melbourne](#): Largest container and automotive port in Australia



STATE OF DISCOVERY

1. Confident communities and responsible explorers
2. Advancing geoscience and encouraging mineral exploration and development
3. Victoria as a global mining hub
4. Improve regulation practice and industry compliance
5. Deliver modern, fit-for-purpose laws

North Central Victoria Goldfields Ground Release

TARGET Minerals Exploration Grants

Mining, Engineering, Technology Services accelerator



GEOSCIENCE

Pre-competitive data and knowledge

- free maps, reports, data
- [GeoVic](#): online GIS application

Geology

- Seamless: [1:250k](#) and [1:50k](#)
- [3D model full crust 1:250k](#)

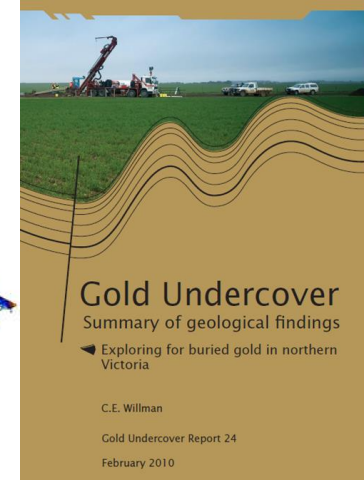
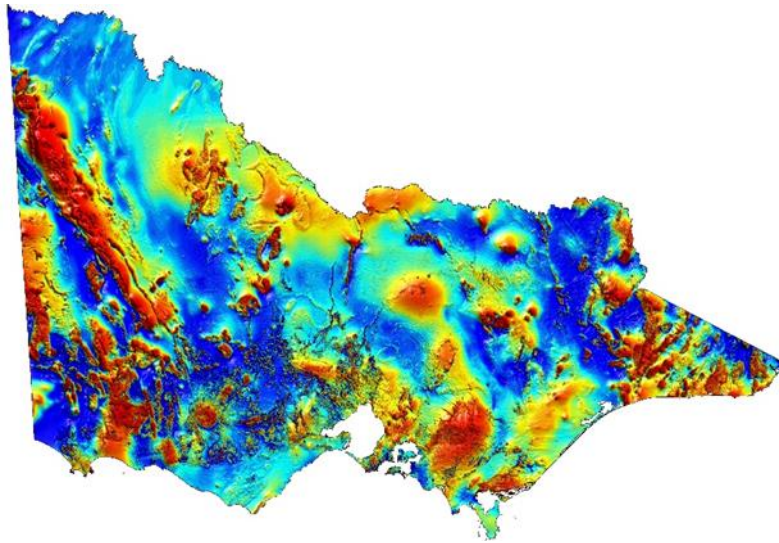
Geophysics

- Modern state-wide
- Magnetics: 200-400m line spacing
- Ground gravity: 1.5 km nominal spacing
- Deep 2D seismic reflection transects

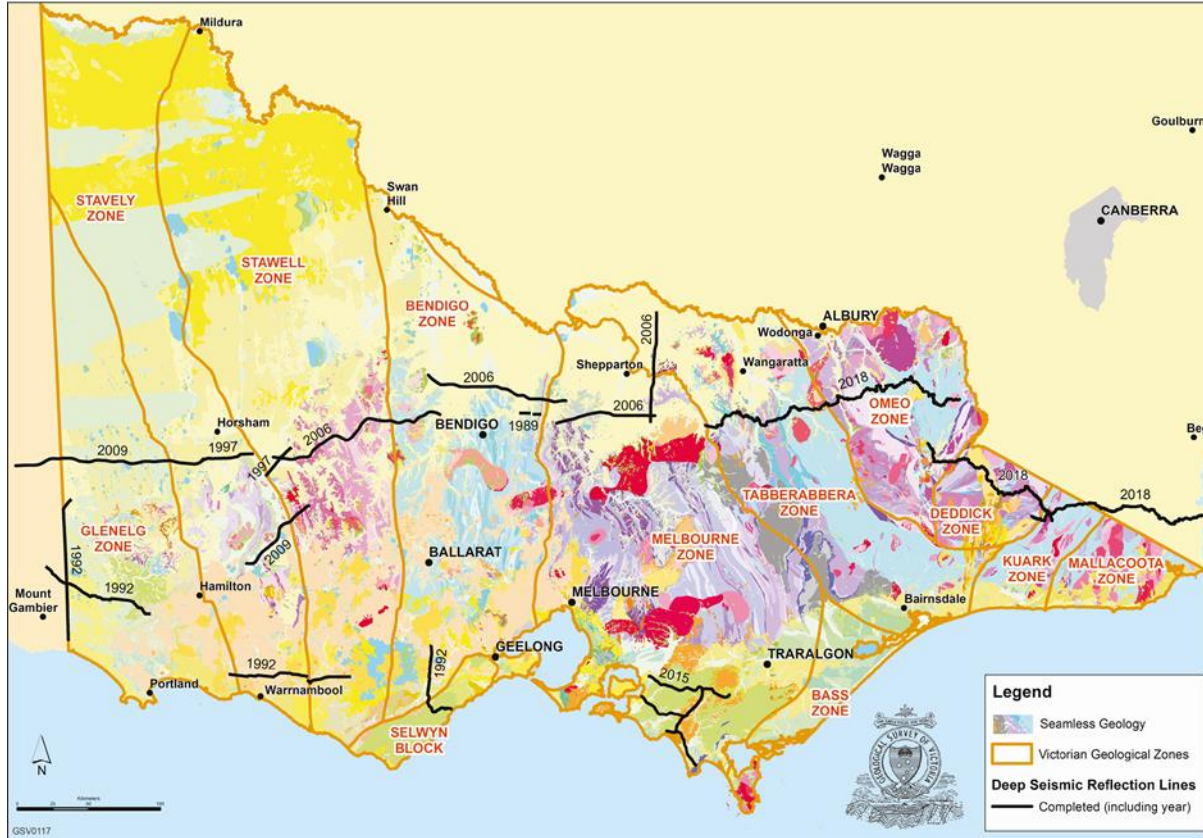
Drill Core Library

- 1.5 million metres drill core/cuttings
- [>18,000 drill holes](#)

AUSTRALIA  MINERALS

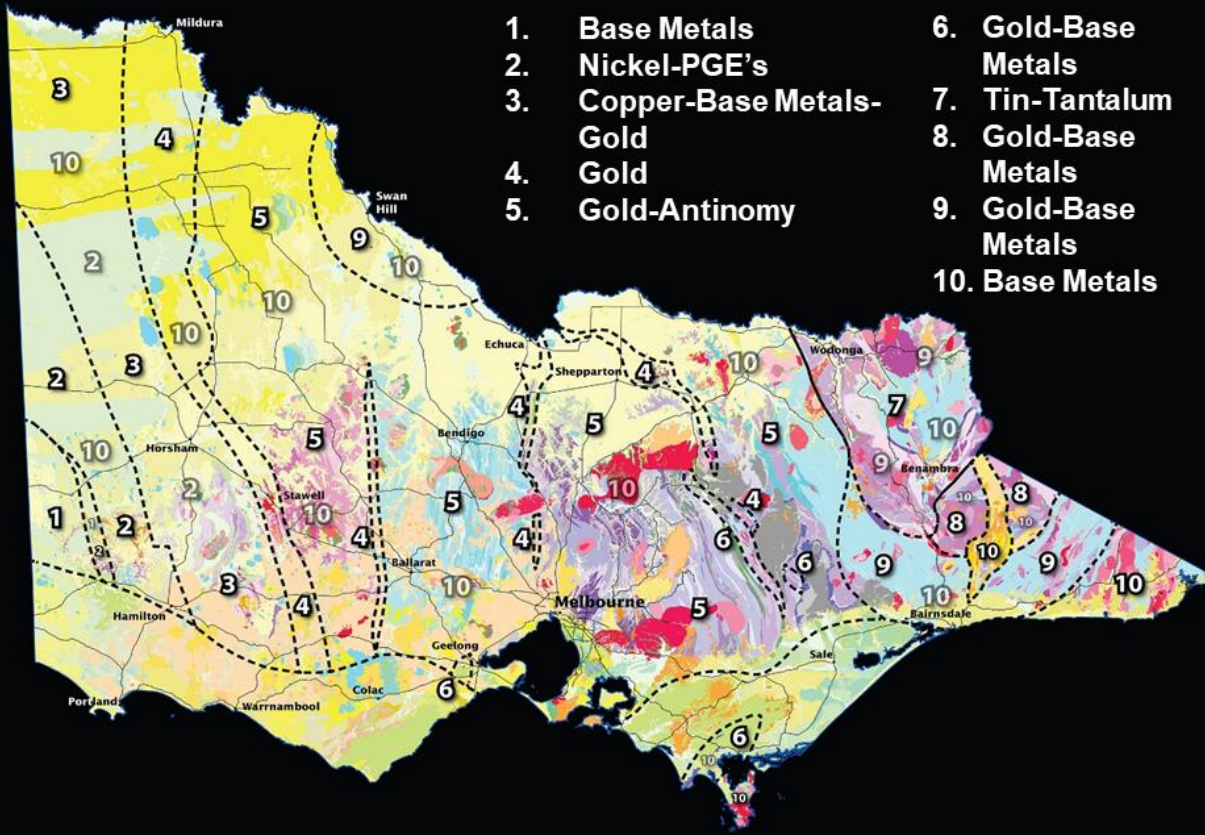


DEEP SEISMIC REFLECTION

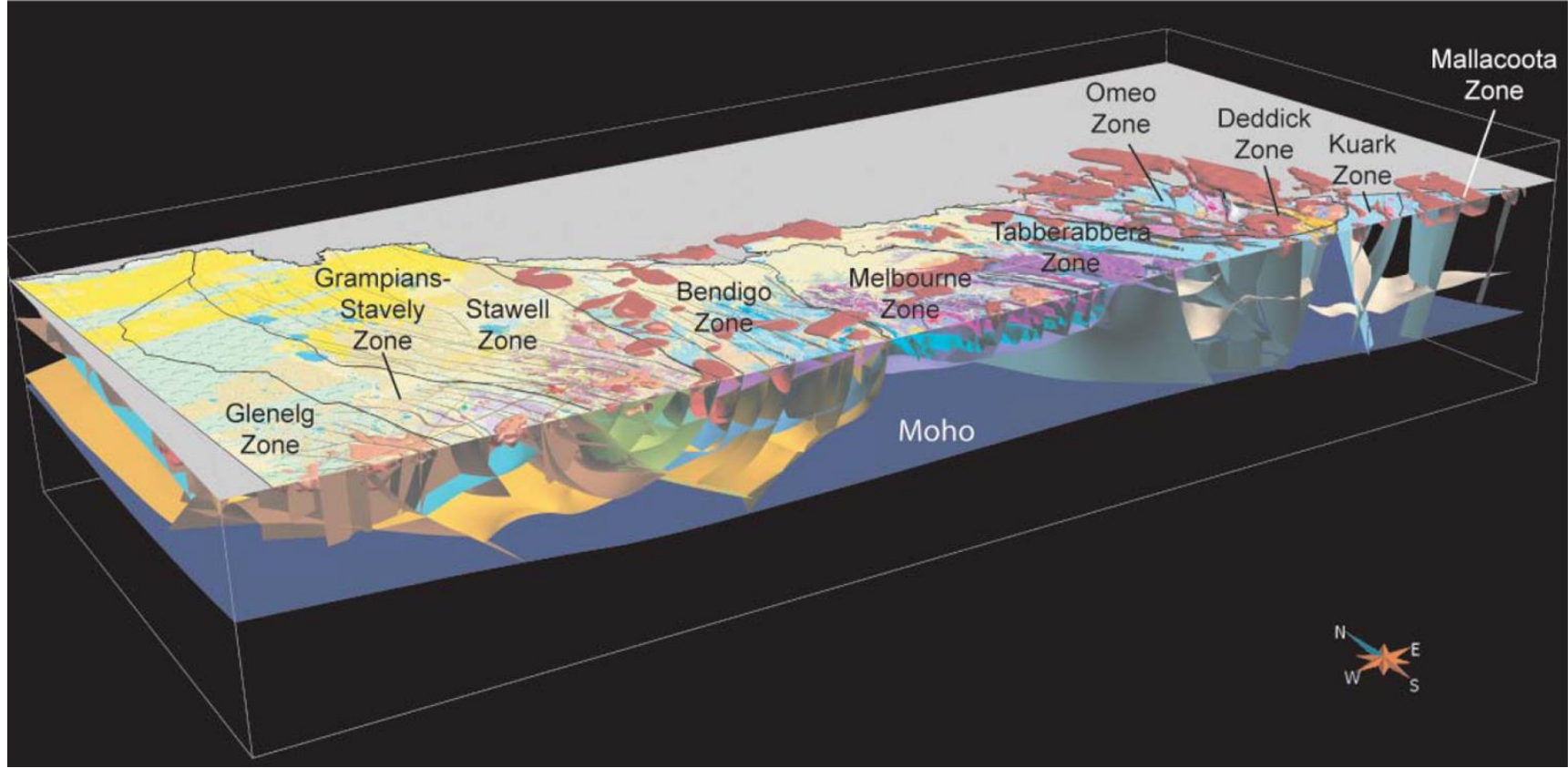


COMMODITIES – A SYSTEMS APPROACH

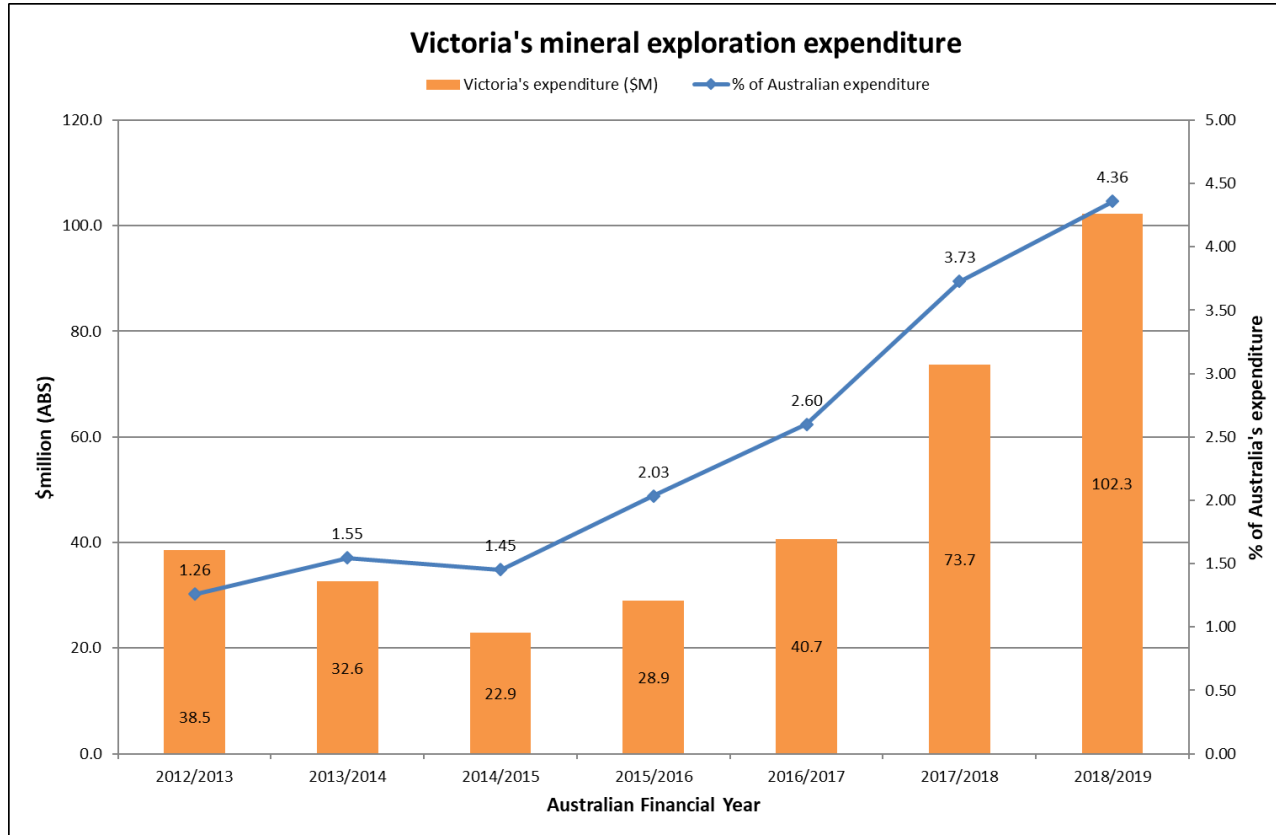
- | | |
|----------------------------|---------------------|
| 1. Base Metals | 6. Gold-Base Metals |
| 2. Nickel-PGE's | 7. Tin-Tantalum |
| 3. Copper-Base Metals-Gold | 8. Gold-Base Metals |
| 4. Gold | 9. Gold-Base Metals |
| 5. Gold-Antimony | 10. Base Metals |



STATE WIDE INFORMED 3D MODEL



HEALTHY EXPLORATION ACTIVITY

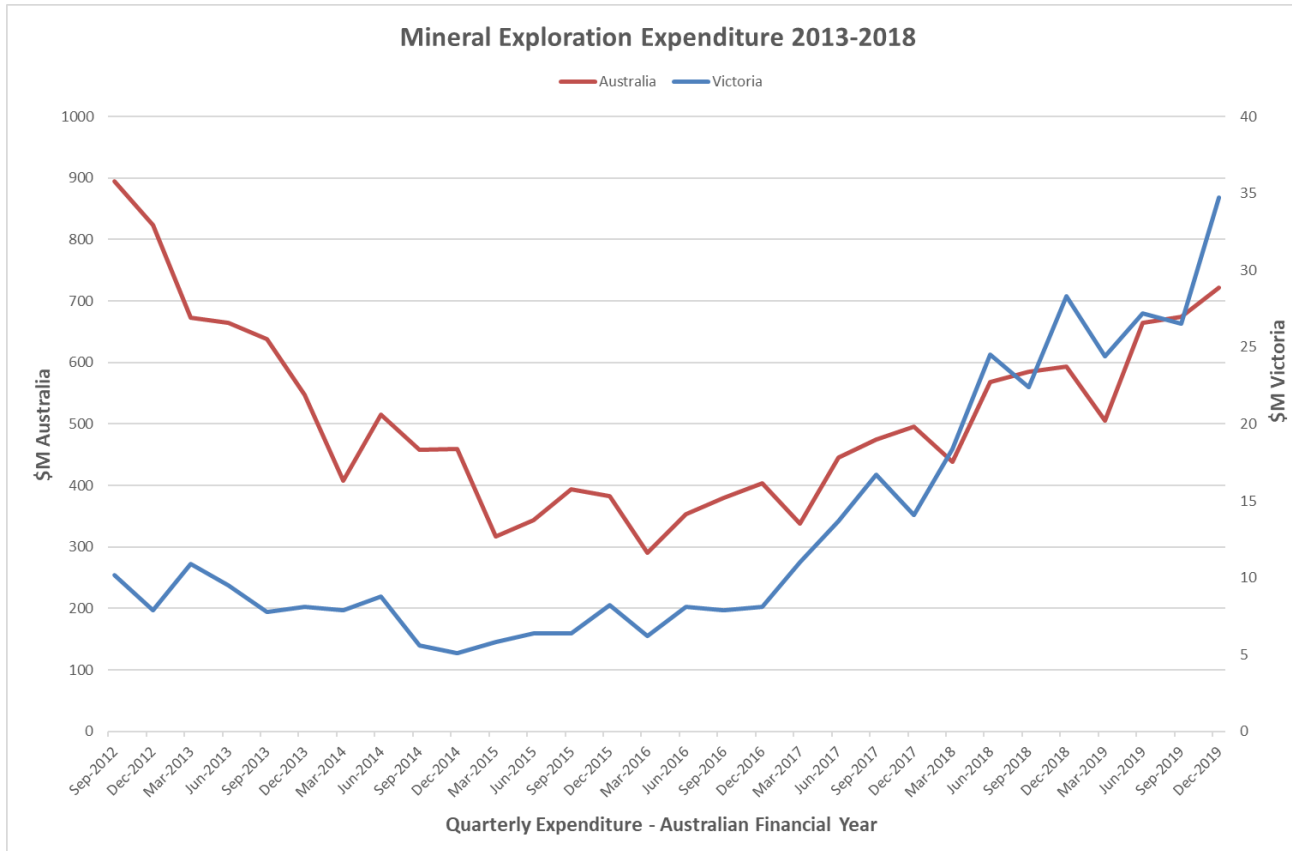


Year	Drill metres
2012/2013	177,077
2013/2014	133,596
2014/2015	87,321
2015/2016	147,164
2016/2017	191,658
2017/2018	191,229
2018/2019	348,192

Source: GSV

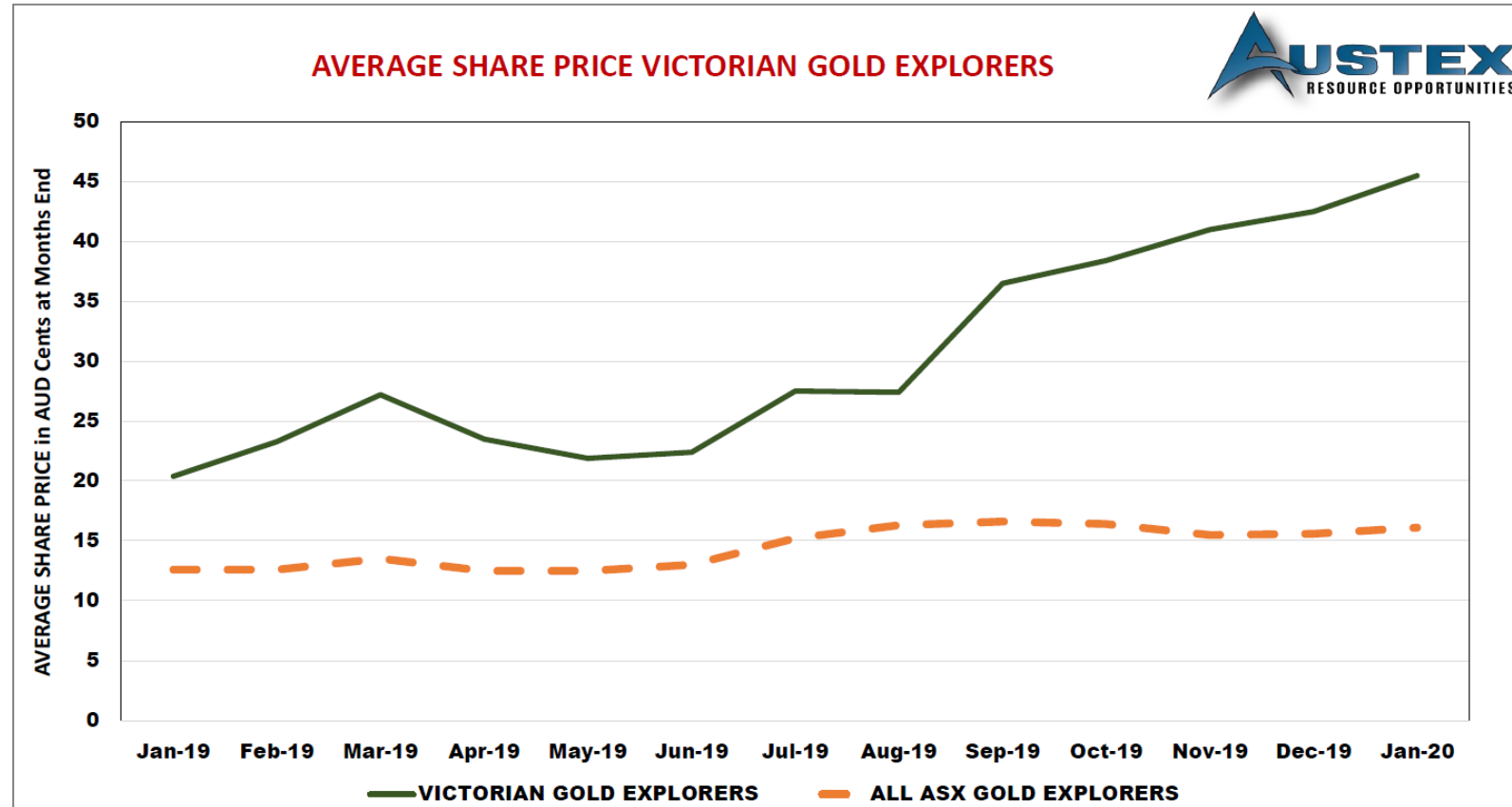
Source: ABS

INCREASING MINERAL EXPLORATION



Source: ABS

LISTED JUNIOR VALUE IN VICTORIA



FOSTERVILLE – Approaching ~10Moz

Production 2019

619,366oz @ 39.6g/t Au

Recovery: 98.8%

Operating Cash Cost/oz: \$119/oz

AISC: TBA

Current reserves (February 2020)

2.1Moz @ 21.8g/t Au

Guidance

2020: 590,000-610,000k (\$130-150/oz)

2021: 550,000-600,000k

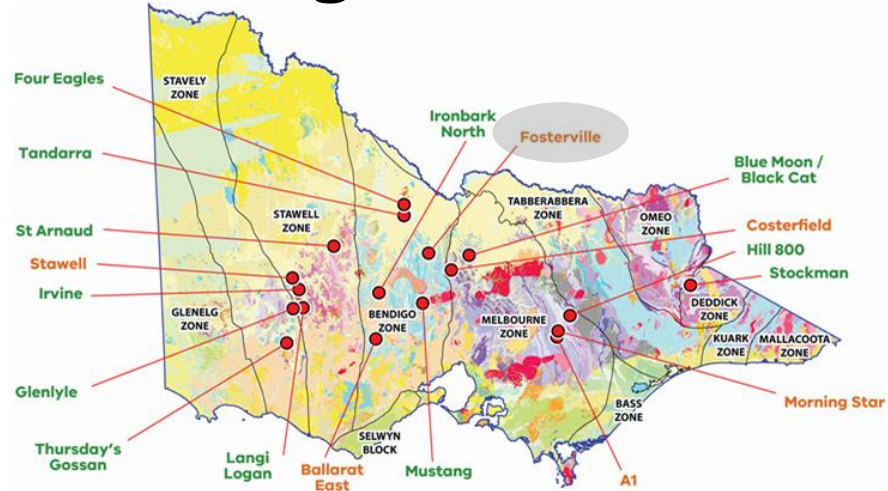
2022: 500,000-600,000k

Exploration 2020

\$70M

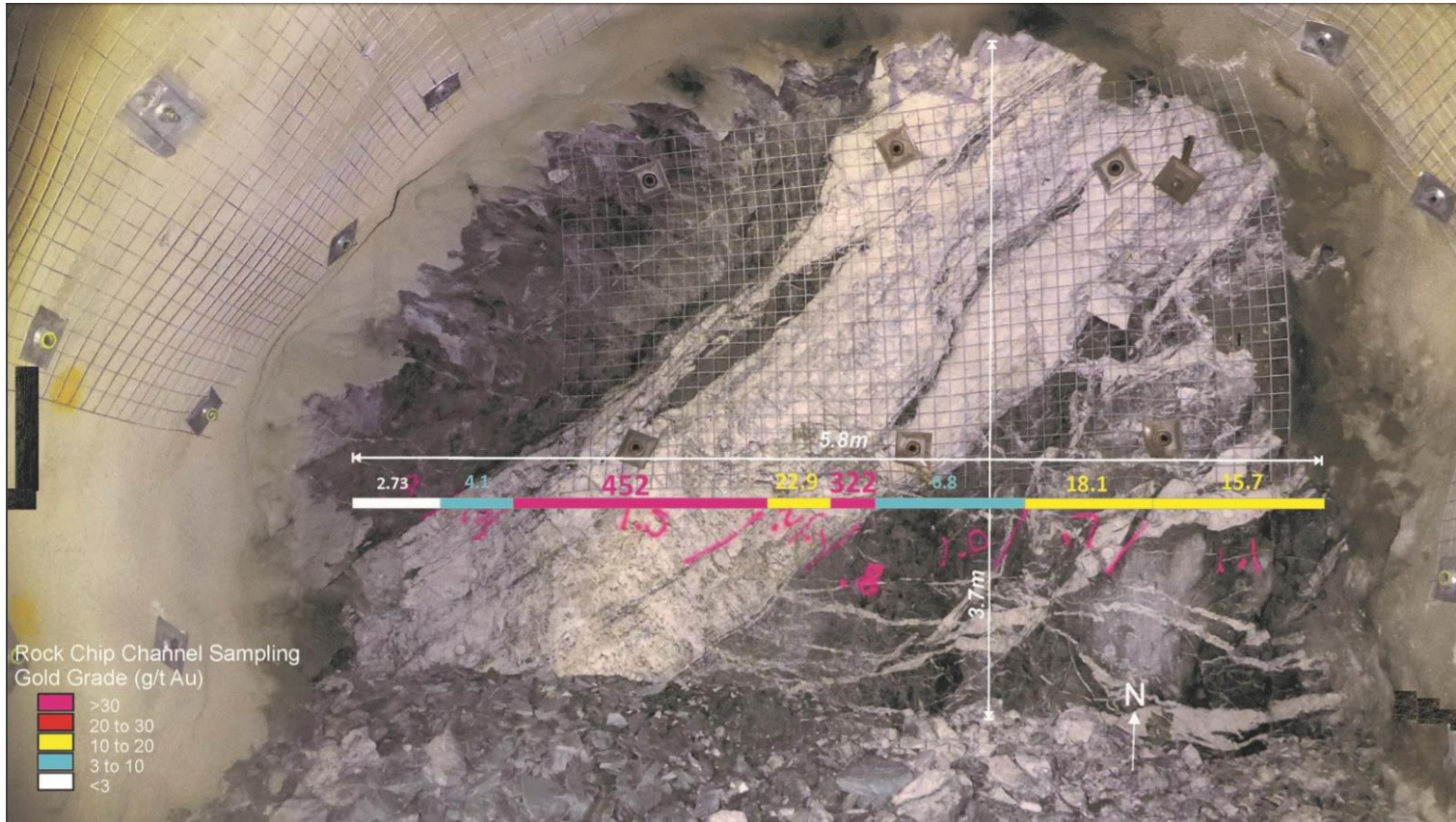
Robbins Hill

AUSTRALIA  MINERALS



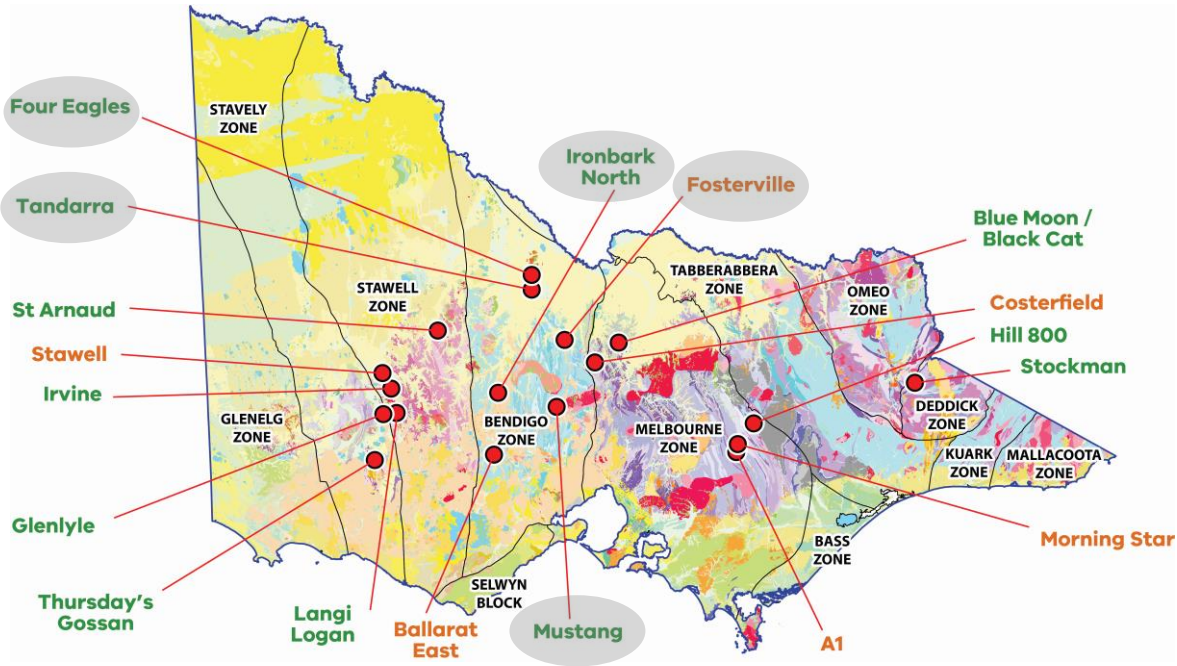
Source: KLG, Fosterville Gold Mine Update, AIG (Victoria) Minerals Roundup 2019

FOSTERVILLE – Swan Zone



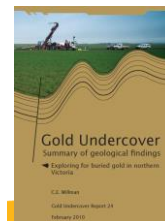
Source: [KLG, Fosterville Gold Mine Update, AIG \(Victoria\) Minerals Roundup 2019](#)

WORLD CLASS GOLD



Gold Undercover

Multi-disciplinary modern applied geoscience
 24 reports, new (free) data, two seminal papers
 Potentially 32Moz yet to find in north Bendigo



Company	Intersection	Producing Mine Prospect
BENDIGO ZONE		
	3.6m @ 924 g/t Au (ETW 3.2m) incl 0.5m @ 6,590 g/t Au (ETW 0.4m) 7.0m @ 918 g/t Au (ETW 6.8m) incl 3.7m @ 1,722 g/t Au (ETW 3.3m) 7.6m @ 87.6 g/t Au (ETW 5.5m) 5.2m @ 45.0 g/t Au (ETW 4.7m) 5.0m @ 59.1 g/t Au (ETW 4.7m)	Fosterville (Swan)
Kirkland Lake Gold	1.2m @ 239 g/t Au (ETW 0.9m) incl 0.4m @ 701 g/t Au (ETW 0.3m) 58.7m @ 4.8 g/t Au (ETW 20m)	Fosterville (Cygnet)
	2.8m @ 1,083 g/t Au (ETW 2.6m) incl 0.4m @ 8,610 g/t Au (ETW 0.3m) 4.8m @ 40.8 g/t Au (ETW 4.4m)	Fosterville (Swan Footwall Splay)
	3.7m @ 24.5 g/t Au (ETW 3.4m) incl 1m @ 82.3 g/t Au (ETW 0.9m) 8.8m @ 11.7 g/t Au (ETW 7.2m) incl 0.5m @ 81.7 g/t Au (ETW 0.4m)	Fosterville (Robbins Hill)
Catalyst Metals/ Gold Exploration Victoria	11m @ 37.2 g/t Au incl 1m @ 247 g/t Au and 1m @ 150.5 g/t Au 3.4m @ 7.5 g/t Au incl 0.7m @ 34 g/t Au and 1m @ 24.3 g/t Au	Four Eagles (Boyd's Dam)
	5.0m @ 13.1 g/t Au incl 3m @ 21.4 g/t Au	Four Eagles (Cunneens)
Catalyst Metals/ Navarre Minerals	3m @ 44.6 g/t Au incl 1.0m @ 131 g/t Au 24m @ 4.2 g/t Au incl 6.0m @ 14.3 g/t Au 14.6m @ 3.0g/t Au incl 7m @ 5.4 g/t Au 0.4m @ 243 g/t Au	Tandarra (Tomorrow)
Kalamazoo Resources	0.8m @ 19.4 g/t Au	Mustang
Chalice Gold	20m @ 0.85 g/t Au incl 8m @ 2.0 g/t Au	Ironbark North

Selected publicly reported mineralised intersections as of July 1, 2019.
 All intersections are downhole, unless Estimated True Width (ETW) is stated.
 (No available drilling results for Castlemaine Goldfields, Arete Capital Partners & Round Oak Minerals)

THE CAYLEY LODGE

Cu-Au-Ag (chalcopyrite, bornite, chalcocite)

Cambrian (Arc) volcanics

Thursday's Gossan Prospect

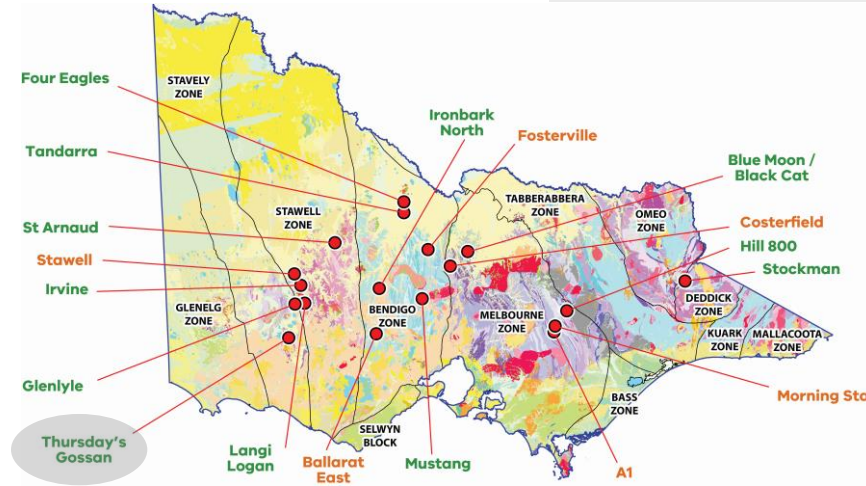
Porphyry affinity - Magma/Butte analogy(?)

8m @ 9.69% Cu, 0.40g/t Au, 16.8g/t Ag from 177m

Incl 2m @ 17.3% Cu, 0.57g/t Au, 13.1g/t Ag

8m @ 5.12% Cu, 1.48g/t Au, 34.3g/t Ag from 121m

Incl 1m @ 26.8% Cu, 8.48g/t Au, 201g/t Ag*



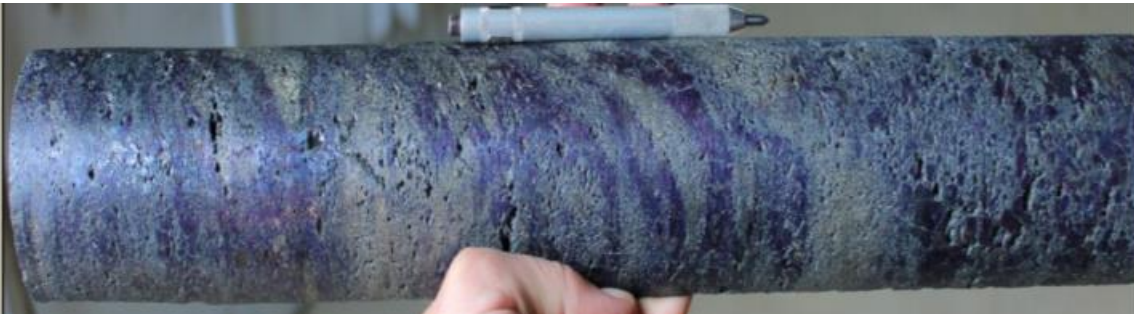
GSV-GA Stavely Project

Pre-competitive data, 22 reports

3D geology (structural) model

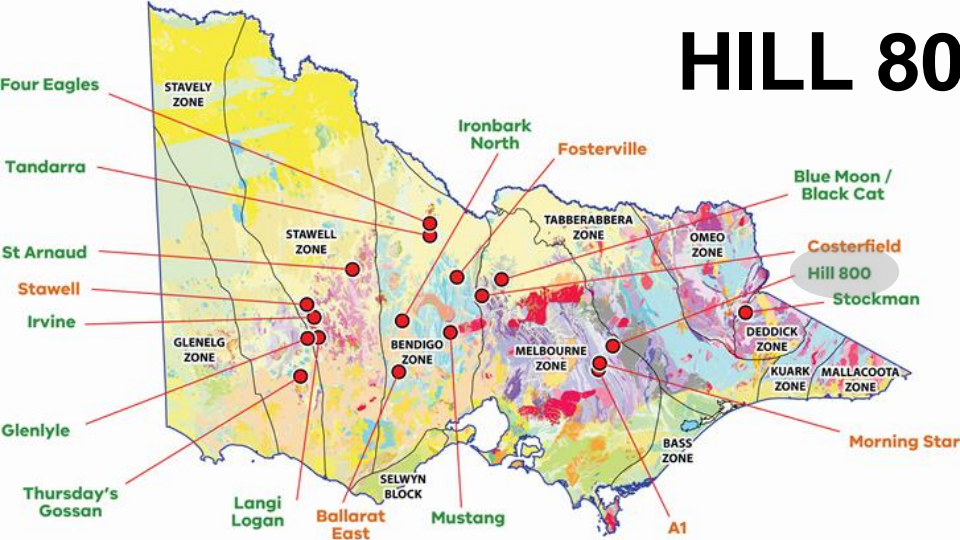
Presentations

Short Film



32m @ 5.88% Cu, 1.0g/t Au, 58g/t Ag from 62m, Incl 12m @ 14.3% Cu, 2.26g/t Au, 145g/t Ag, incl 2m @ 40% Cu, 3.0g/t Au, 517g/t Ag

HILL 800



101m @ 1.44g/t Au from 21m
incl 12m @ 4.32g/t Au from 83m

17m @ 6.62g/t Au, 0.3% Cu from 157m
incl 2m @ 37.5g/t Au, 0.3% Cu from 172m
1m @ 20.2g/t Au, 0.2% Cu from 166m

11m @ 9.87g/t Au, 0.3% Cu and 14.6g/t Ag from 179m
incl 4m @ 26.7g/t Au, 0.7% Cu and 38.7g/t Ag

Copper – Gold ± Silver
Cambrian (Arc) volcanics
Gold at surface
Multiple porphyry targets
Western Tasmania affinity



H8DD002, 187m, 16.7g/t Au, 1.1% Cu

CRITICAL METALS

Antimony

Central Victoria

Costerfield – Australia’s largest producer (World top 5)

1.18m @ 159.2g/t Au, 38.3% Sb

0.37m @ 303g/t Au, 52.1% Sb

Heavy Mineral Sands (Rare Earth Elements)

West/Northwest Victoria

World class province

WIM (Wimmera) style

Lithium (Rare Earth Elements)

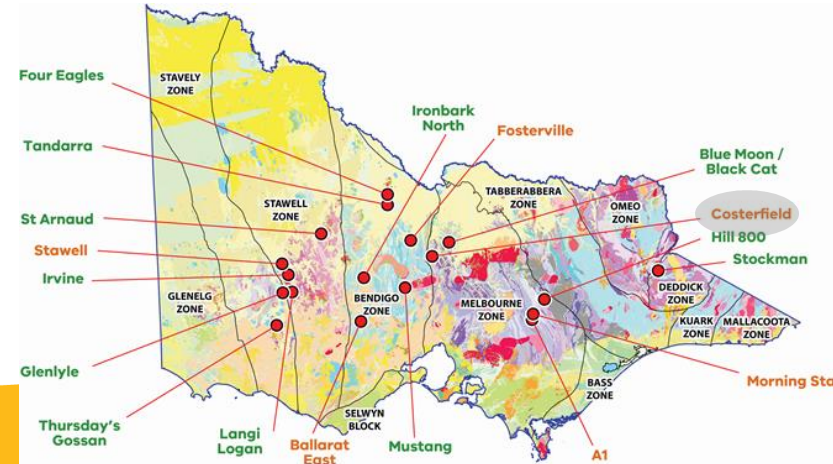
Northeast Victoria

Dorchap (pegmatite) Dyke Swarm

Early stage



Costerfield (Youle): 2.12m @ 85.3g/t Au, 6.5% Sb





INTERNATIONAL MINING AND RESOURCES CONFERENCE + EXPO

27 - 29 OCTOBER 2020

imarcmelbourne.com

- >7,000 delegates from >100 countries
- >350 mining and resource experts
- >35 international mining ministers
- >100 hours networking opportunities

FREE Exhibition

- >200 leading service companies

Exploration, Investment and Finance, Future Energy, International and Local opportunities, People, Projects and Infrastructure, Technology, Innovation and Operational Excellence, Country Focus sessions

AUSTRALIA  MINERALS



THANK YOU

Cameron.Cairns@ecodev.vic.gov.au

Manager Minerals Geoscience

Geological Survey of Victoria

+61 3 9452 8972

earthresources.vic.gov.au

